

z.LiNK-Interface

CI-ZL-MYGIG500

**Audio-video-input and rear-view camera input
incl. video-in-motion
compatible with Chrysler, Dodge, Jeep and Lancia
vehicles with MYGIG navigation systems**

**AV-input to connect any AV-source and a rear-view camera
to the factory navigation system incl. video-in-motion**

Contents

1. Prior to installation

- 1.1. Delivery contents
- 1.2. Check compatibility of vehicle and accessories
- 1.3. Pin assignments

2. Connection schema

3. Installation

- 3.1. Setting the dip-switches of the CAN-box
- 3.2. Activation of the interface as current AV-source

4. Activation of the video-in-motion function

5. Specifications

Legal Information

By law, watching moving pictures while driving is prohibited, the driver must not be distracted. We do not accept any liability for material damage or personal injury resulting, directly or indirectly, from installation or operation of this product. This product should only be used while standing or to display fixed menus or rear-view-camera video when the vehicle is moving, for example the MP3 menu for DVD upgrades.

Changes/updates of the vehicle's software can cause malfunctions of the interface. We offer free software-updates for our interfaces for one year after purchase. To receive a free update, the interface must be sent in at own cost. Labor cost for and other expenses involved with the software-updates will not be refunded.

1. Prior to installation

Read the manual prior to installation. Technical knowledge is necessary for installation. The place of installation must be free of moisture and away from heat sources.

1.1. Delivery contents

Take down the SW-version and HW-version of the interface boxes, and store this manual for support purposes.



1.2. Check compatibility of vehicle and accessories

Requirements

Vehicle

Chrysler 200 2011-2012, **300** 2008-2010, **Aspen** 2008-2009, **Sebring** 2008-2010, **Town & Country** 2008-2012

Dodge Avenger 2008-2012, **Caliber** 2009-2012, **Challenger** 2008-2012, **Charger** 2008-2010, **Dakota** 2008-2012, **Durango** 2008, **Grand Caravan** 2008-2012, **Journey** 2008-2010, **Magnum** 2008, **Nitro** 2007-2012, **RAM 1500** 2009-2012, **RAM 2500** 2010-2012, **RAM 3500** 2010-2012

Jeep Commander 2008-2010, **Compass** 2009-2012, **Grand Cherokee**, 2008-2010, 2012, **Liberty** 2008, **Patriot** 2009-2011, **Wrangler** 2007-2012

Lancia Voyager ab 2011, **Flavia**

Navigation

MYGIG REW, RER, REN and RHW, RB2 U-Connect 431

Limitations

Factory-RSE

Must NOT be installed.

Video-sources

Only compatible to NTSC-video-sources.

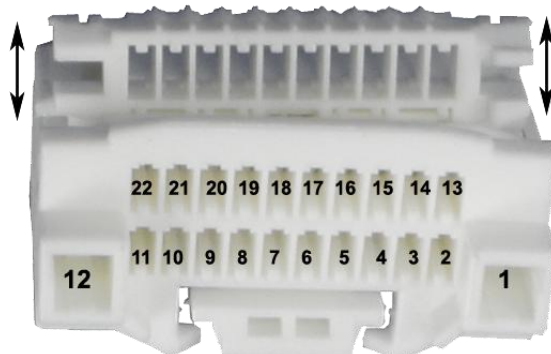
1.3. Pin-assignments

Pin-assignment AV-INPUT

Connection	Cable colour/connector	White 22pin MYGIG connector	
Video input	RCA female yellow		
Video signal	● yellow	→	pin 9
Ground	● black	→	pin 10
Audio input	RCA female red/white		
Audio signal (right)	● red	→	pin 14
Audio signal (left)	● white	→	pin 13
Audio ground	● black	→	pin 01
Rear-view camera input	RCA female black		
Video signal	● black (ø 0,25)	→	Pin 03
Ground	● black (ø 0,5)	→	Pin 04

Pin-assignment AV-OUTPUT (rear-seat-entertainment)

Connection	Cable colour/connector	White 22pin MYGIG connector	
Video output	RCA female yellow		
Video signal	● yellow	→	pin 6
Ground	● black	→	pin 7
Audio output	RCA female red/white		
Audio signal (right)	● red	→	pin 20
Audio signal (left)	● white	→	pin 18
Audio ground	● black	→	pin 19

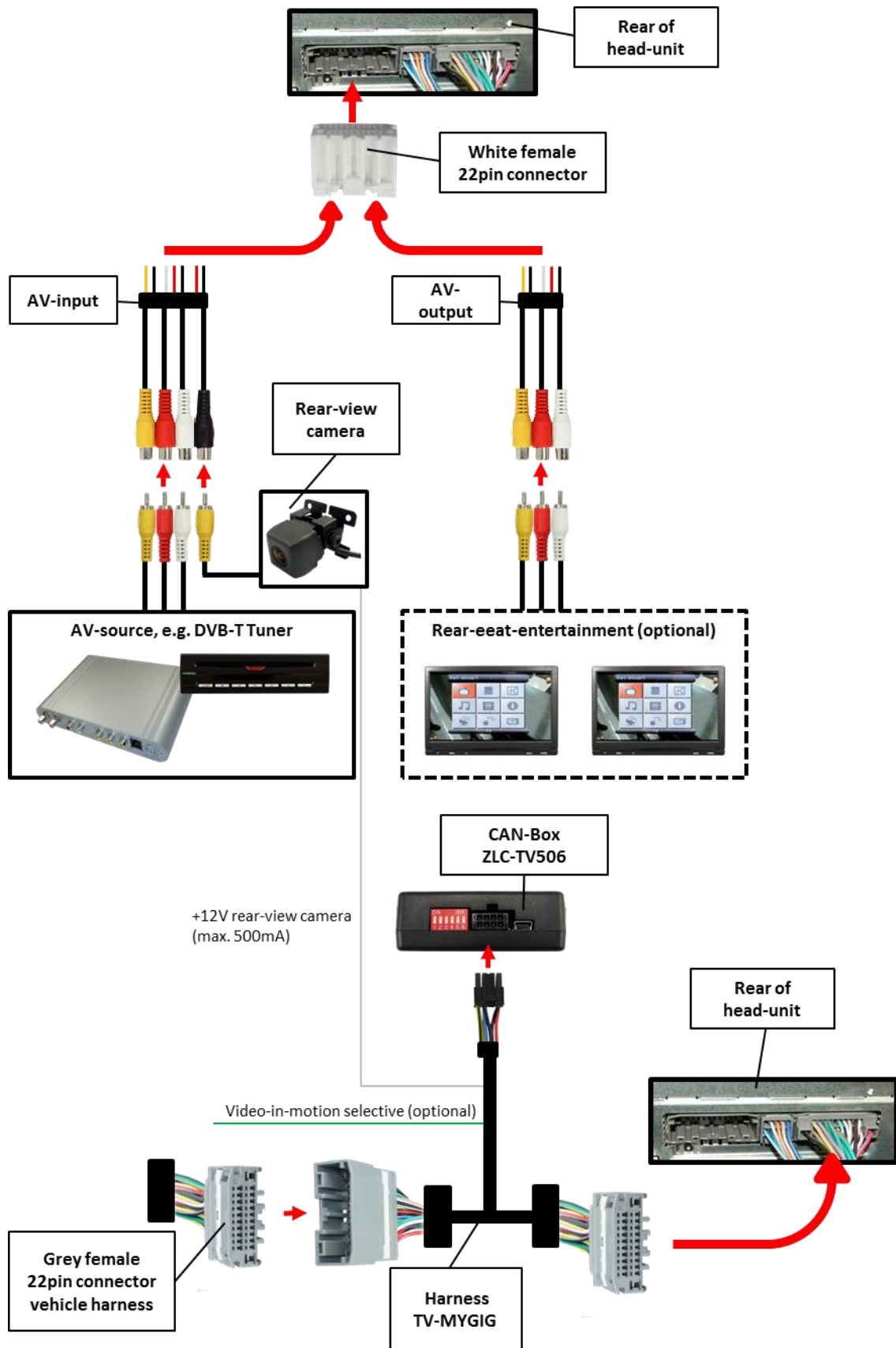


Pin-assignment white 22pin connector

Pin-assignment of the CAN-Box ZLC-TV506 (Molex 8pin)

Cable colour	Pin-No.	Assignment
● Yellow	Pin 4	CAN-HIGH – connection to the head-unit
● Blue	Pin 3	CAN-LOW – connection to the head-unit
●● Yellow/Black	Pin 8	CAN-HIGH – connection to the vehicle
●● Blue/Black	Pin 7	CAN-LOW – connection to the vehicle
● Red	Pin 1	+12V permanent
● Black	Pin 5	Ground
● Green	Pin 6	Activation of the video-in-motion function (+12V = TV-free activated, only if Dip1=OFF)
● White	Pin 2	Trigger output (+12V DC 500mA) (only if Dip2=ON and reverse gear engaged!)

2. Connection schema



3. Installation

Switch off ignition and disconnect the vehicle's battery! If according to factory rules disconnecting the battery has to be avoided, it is usually sufficient to put the vehicle in sleep-mode. In case the sleep-mode does not show success, disconnect the battery with a resistor lead.

Place of installation is behind the head-unit.

Note: It is possible to use the white cable for +12V power supply (max. 500mA) of an after-market rear-view camera. The white cable is high when reverse gear is engaged.

3.1. Setting the dip-switches of the CAN-box

vehicle	Dip 1	Dip 2	Dip 3	Dip 4	Dip 5	Dip 6
Vehicles with rear-view camera or with factory rear-view camera	ON*	OFF	OFF	OFF	ON	ON
Vehicles without after-market rear-view camera	ON*	ON	OFF	OFF	ON	ON
Lancia Flavia with MYGIG/ Dodge with RB2 U-Connect 431	ON*	ON/OFF	OFF	OFF	OFF	OFF

* With dip1 to OFF the included green cable or some steering-wheel buttons are used to activate the video-in-motion function.

Note: Dip switch functions of the ZLC-TV506

Dip 1 – activation TV-free

Dip 2 – rear-view camera refitting

Dip 3 – no function

Dip 4 – no function

Dip 5 – CAN-bus termination resistor on the vehicle side

Dip 6 – CAN-bus termination resistor on the head-unit side

Note: If the setting of Dip 5 and 6 is wrong the navigation/head-unit doesn't turn on after installation.

Instruction for example Chrysler C300

Remove the front panel from the centre console, which is attached to multiple clips.



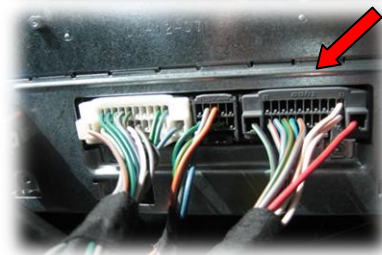
Remove the 4 TORX screws and pull the device out of the centre console.



Remove the grey female 22pin connector from the rear of the device and connect it to harness TV-MYGIG. Connect the grey female 22pin connector of harness TV-MYGIG to the device.



Connect the AV-input and the AV-output to the white female 22pin connector according the pin assignment and connect the Female RCA to the av-sources.

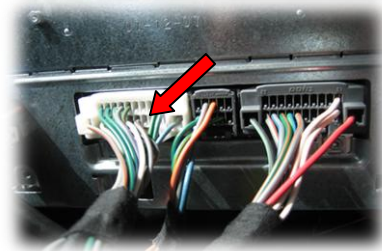


Note: Use the attached white female 22pin connector if the male 22pin connector of the head-unit isn't occupied by a white female 22pin connector.

If the male 22pin connector of the head-unit is occupied by a white female 22pin connector connect the pins into the white female 22pin connector of the vehicle (the attached white female connector will not be required).

There are 2 options if the pins are occupied by factory:

1. Factory-RSE is installed. This interface will not be needed (separate video-in-motion TF-MYGIG optionally available).
2. Factory RSE isn't installed. The pins are prepared by factory and can be removed.



3.2. Activation of the interface as current AV-source

Press **RADIO/MEDIA button** and after it **VES** followed by **AUX IN 1** via Touch-Screen to select the interface as current AV-source.



Note: The interface switches automatically to an installed rear-view camera when reverse gear is engaged.

4. Activation of the video-in-motion function

The video-in-motion can be activated and deactivated by Dip 1 or alternatively by the included loose green cable in connection with a switch (not included in delivery) respectively by some steering-wheel buttons.

Video-in-motion permanent

With dip1 to ON the video-in-motion function is activated permanently without disturbing the navigation performance.

Video-in-motion selective

With dip1 to OFF the included green cable or some steering-wheel buttons are used to activate the video-in-motion function.

Green cable

Connect a switch to the green cable and connect the green cable to +12V ACC.

- +12V = TV-Free is activated
- 0V = TV-Free is not activated

Steering-wheel buttons


Press the following steering-wheel buttons for 3 seconds to activate/deactivate the video-in-motion function:

Vehicles with high-speed IHS-Can (125kbit) – “Station”-button on the rear of the steering-wheel in the middle on the left side.

Vehicles with low-speed B-Can (83kbit) – “Arrow to the right”-button on the front of the steering-wheel.

5. Specifications

Operation voltage	10.5 – 14.8V DC
Stand-by power drain	>1mA
Operation power drain	~60mA
Power consumption	~0,72W
Temperature range	-30°C to +80°C
Weight	44g
Measurements (box only) B x H x T	70 x 20 x 47 mm

CE  12V DC

Legal disclaimer: Mentioned company and trademarks, as well as product names/codes are registered trademarks ® of their corresponding legal owners.