

适用于

Romeo、Giulietta

車載無線智聯終端

說明書



Car mounted wireless intelligent
connection terminal

敬請注意:

尊敬的用戶您好,在您安裝好本系統後針對部分沒有AUX的車型需要通過原車藍牙傳輸聲音的時候請先進入原車系統藍牙電話頁面,利用車機「藍牙電話」主動搜索或等待搜索本系統的藍牙設備「DC_AUDIO_BT_****」,待本系統藍牙與車載藍牙電話連接成功以後進入到原車藍牙音頻功能,再按相應按鍵切換到系統頁面,開始後續操作。

Please note:

Dear user, after installing this system, for some models without AUX that require sound transmission through the original car Bluetooth, please first enter the original car system Bluetooth phone page and use the car's "Bluetooth phone" to actively search or wait for the Bluetooth device "DC_AUDIO_BT_****" of this system. After the Bluetooth of this system is successfully connected to the car's Bluetooth phone, enter the original car Bluetooth audio function, Press the corresponding button again to switch to the system page and start subsequent operations.

免責聲明 Disclaimer:

Apple、iPhone、Carplay和Carplay標誌是蘋果公司的註冊商標和所有權

Apple, iPhone, Carplay, and the Carplay logo are registered trademarks and ownership of Apple Corporation

Android、Google Maps、Android auto和Waze是Google 公司的註冊商標和所有權

Android, Google Maps, Android auto, and Waze are registered trademarks and ownership of Google Corporation

百度、Carlife和carlife標誌是百度公司的註冊商標和所有權

Baidu, Carlife, and the Carlife logo are registered trademarks and ownership of Baidu Company

華為、華為hicar和hicar標誌是華為公司的註冊商標和所有權

Huawei, Huawei Hicar, and the Hicar logo are registered trademarks and ownership of Huawei Corporation

產品外形尺寸 Overall dimensions of products : 148mm(长)*91mm (宽) *29mm (厚)

主芯片型號 Main chip model : T113-S

功耗電流 Power consumption current: 1A (rated) , 3A (Max)

主頻率 Dominant frequency : 1.2GHz

工作溫度 operating temperature: -40°C~+85°C

內存 Memory : 256MB DDRIII SDRAM

環境濕度 Ambient humidity: $\leq 98\%$ (at45°C) , $65\pm 5\%$ (rated)

存儲空間 Storage space : 128MB NAND Flash

靜態電流 quiescent current: less than 3mA

操作系統 Operating system : Linux 中/英文版

儲藏溫度 Storage temperature: -30~+85°C

關機電流 Shutdown current: 300mA (Clock is on)

工作高度 Working height : 在15000feet (4573 米) 高度下可正常工作

工作電壓 running voltage : 9-16V, 14.4V (rated)

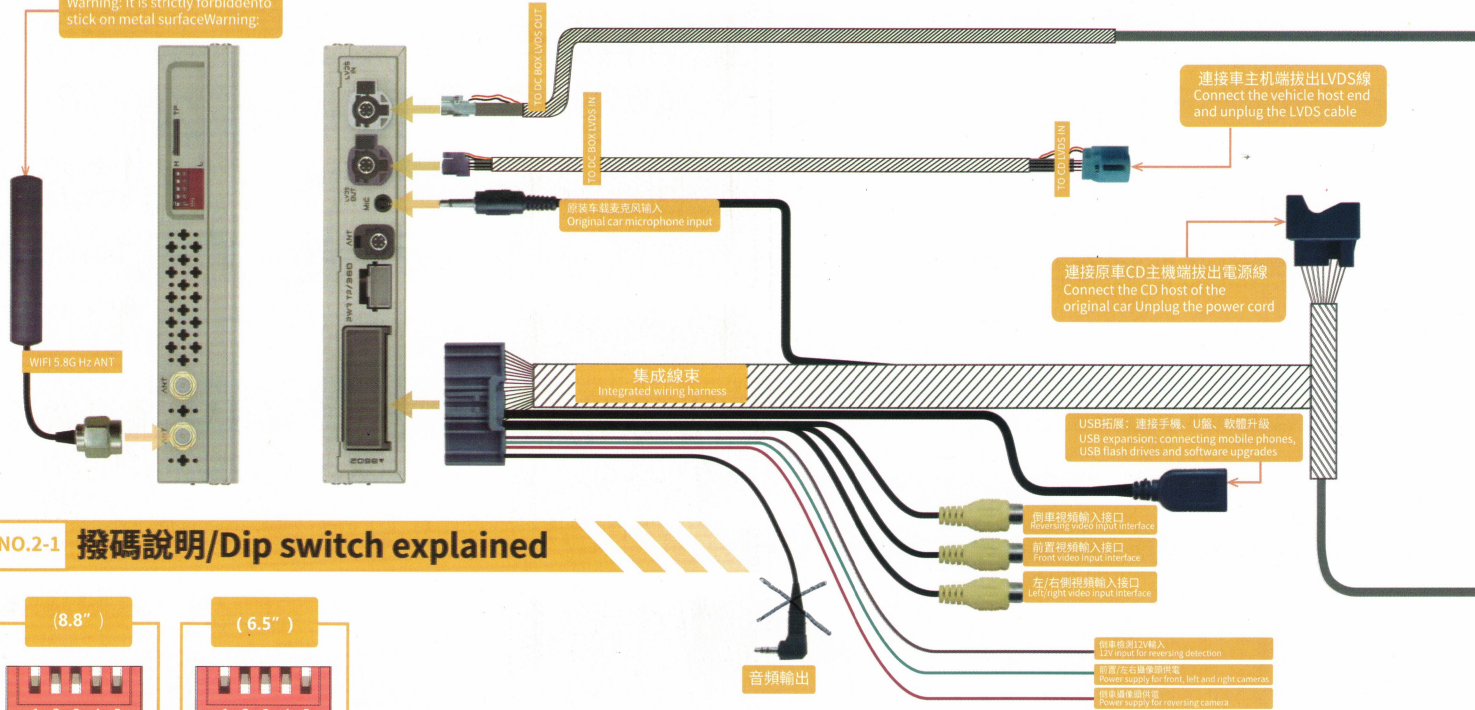
摔落測試 Drop test : 設備從30inches (76cm) 高度摔落后可正常工作

充電電流 charging current: $\leq 1.5A$. 當USB充電電流 $> 3A$ 時, 系統快充單元的智能芯片將自動啟動電路保護, 將充電電流控制在1.5A以下, 保護手機充電過載.

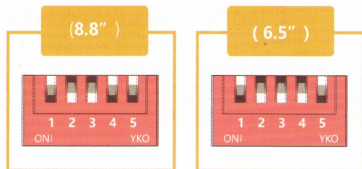
$\leq 1.5A$. when the USB charging current is $> 3A$, the host computer of the radio and receiver should start the circuit protection function to control the current below 1.5A to avoid burning the product.

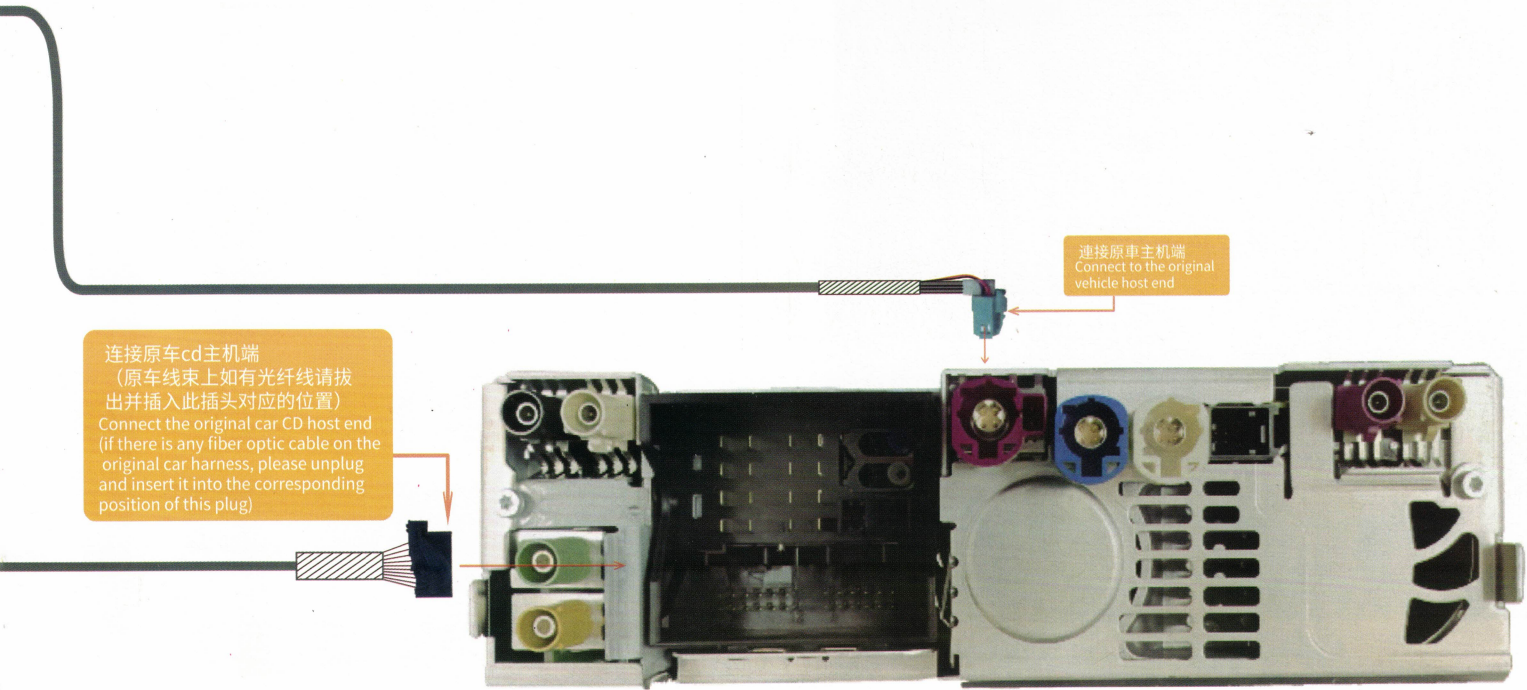
NO.2 romeo連線示意圖 / Schematic diagram of connection

警告：嚴禁粘貼在金屬表面
Warning: It is strictly forbidden to stick on metal surface



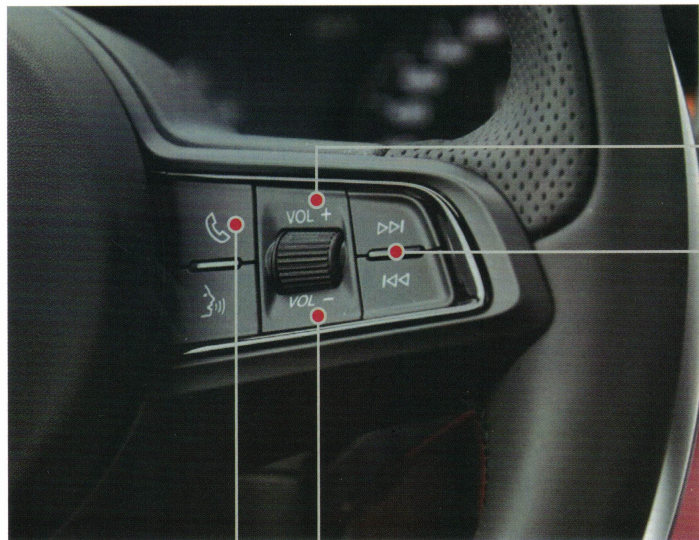
NO.2-1 撥碼說明/Dip switch explained





连接原车cd主机端
(原车线束上如有光纤线请拔出并插入此插头对应的位置)
Connect the original car CD host end
(if there is any fiber optic cable on the original car harness, please unplug and insert it into the corresponding position of this plug)

连接原车主机端
Connect to the original vehicle host end



* 系統音量增加
System volume increases

* 控制媒體上下曲
Control the media up and down

* 系統音量減小
System volume decreases

* 語音喚醒
Voice awakening

* 來電接聽
Call answering

* 結束通話
End call

* 控制媒體上下曲
Control the media up and down

* Idrive旋鈕控制系統APP
Idrive knob control system APP
* 按下進入APP功能
Press to enter the APP function
* 方向鍵控制光標移動
The arrow keys control cursor movement

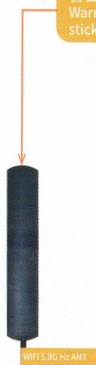
* 長按2秒進入系統頁面
Press and hold for 2 seconds to enter the system page
* 短按回系統主頁面HOME
Short press back to the HOME page of the system



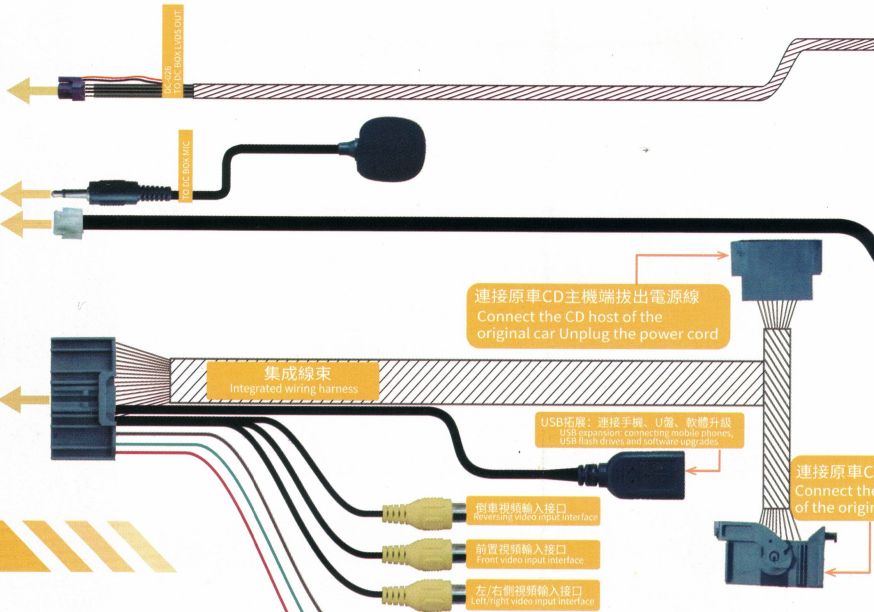
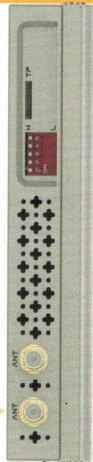
NO.4

Giulietta連線示意圖 / Schematic diagram of connection

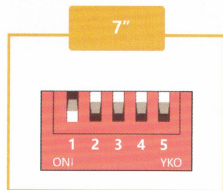
警告：嚴禁粘貼在金屬表面
Warning: It is strictly forbidden to stick on metal surface



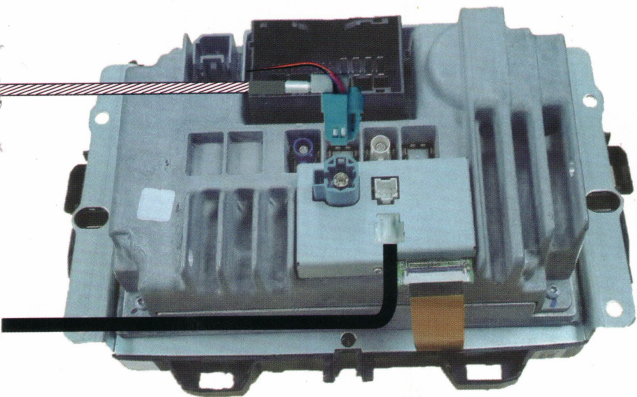
WIFI 5.8G HZ ANT



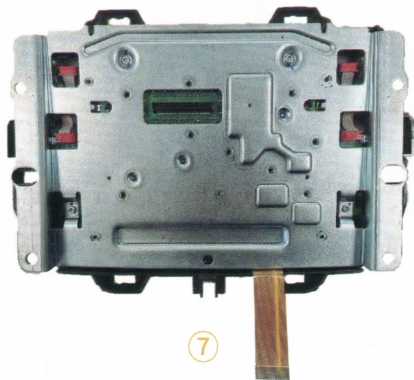
NO.4-1 撥碼說明/Dip switch explained



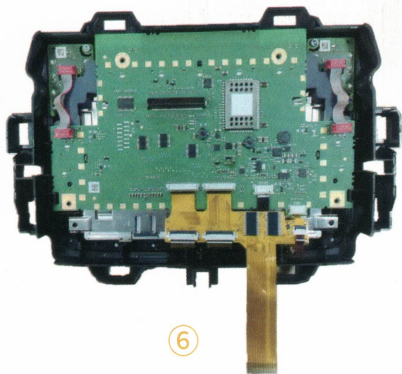
請按①——⑧序列安裝



⑧



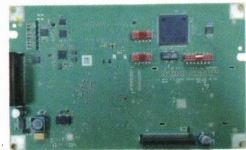
⑦



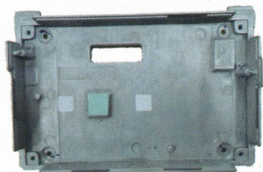
⑥



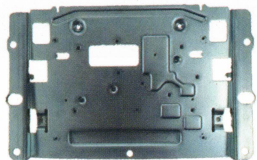
①



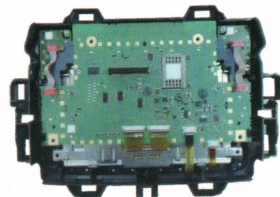
②



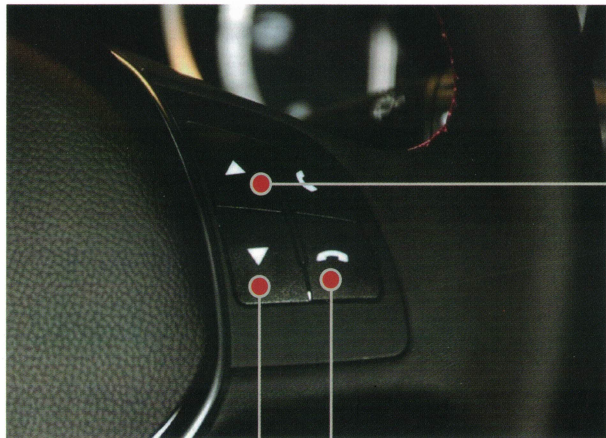
③



④



⑤



* 控制媒體下一曲
Control the media down

* 長按2秒進入系統頁面
Press and hold for 2 seconds to enter the system page

* 語音喚醒
Voice awakening

* 來電接聽
Call answering

* 結束通話
End call

* 控制媒體上一曲
Control the media up



* 觸摸控制APP
Touch control APP



无线智联



智慧出行



本地媒体



在线音乐



在线视频



DSP音效



声控交互



记录仪



无缝交互



AHD IN



CE认证



FCC认证



SRRC认证



RoHS认证

授權經銷商：

AUTHORIZED DEALER

執行標準：

EXECUTIVE STANDARD

GB 4943.1-2011