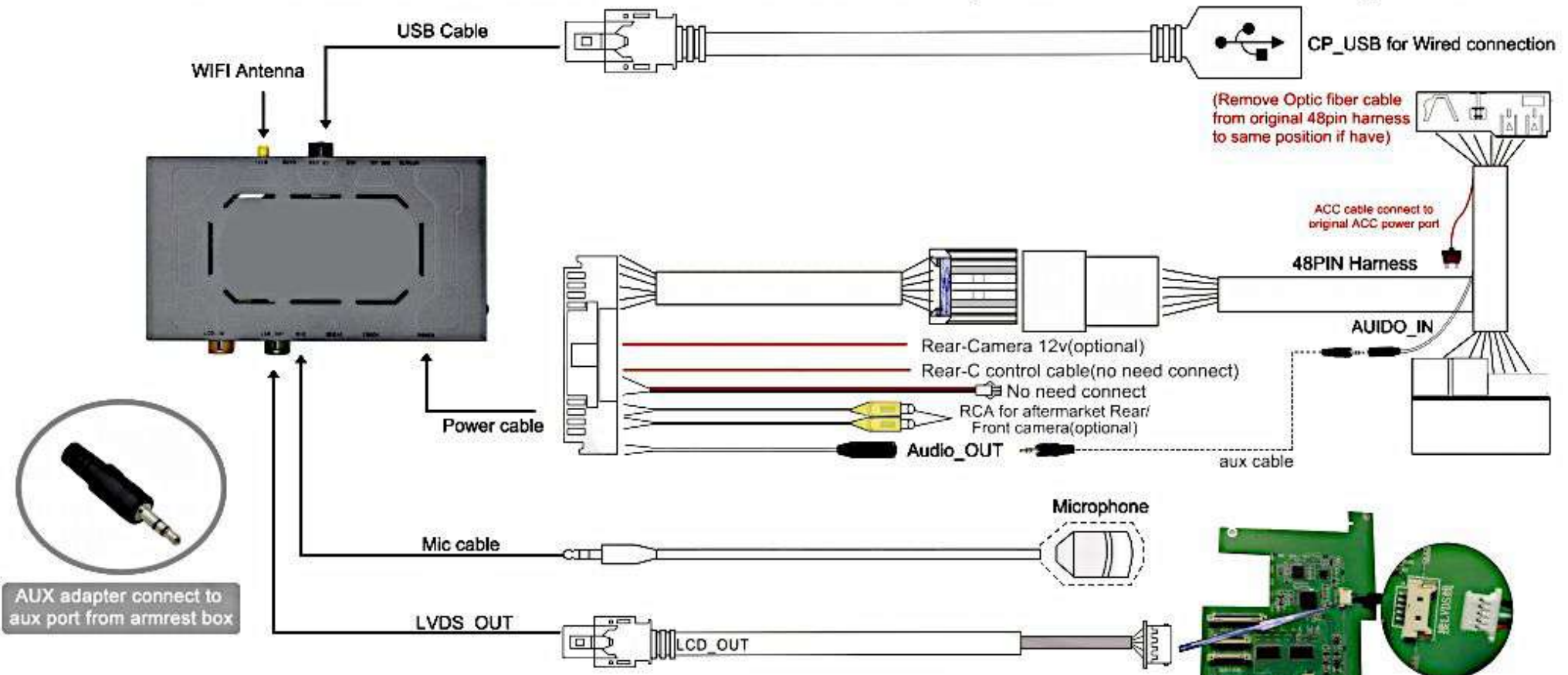
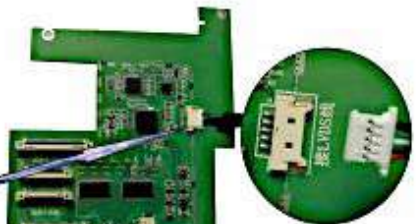


# Porsche PCM3.0 Wireless CarPlay Installation Diagram



AUX adapter connect to aux port from armrest box



Note: Don't connect reverse

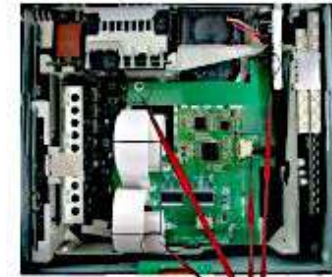
Dip Switch	Status	Description
2	ON	Touch correction
	OFF	OFF after correction
3	ON	For PCM3.0
	OFF	No function
4	ON	Reverse guideline OFF
	OFF	Reverse guideline ON
8	ON	Original Rear Camera
	OFF	Aftermarket Rear Camera

1, 5, 6, 7 all set OFF.



Next song  
Previous song  
Touch Screen  
Retrun to previous  
Knob controls  
Press "PHONE" use Siri  
Press "NAVI" switch to CarPlay system

Select AUX External before switch to CarPlay



2, sub-board installation. connect well with 2PCS FPC and LVDS cable.



3, unscrew thess three screws, and install three copper post. and then convert well with 2 FPC cable(30P/50P).